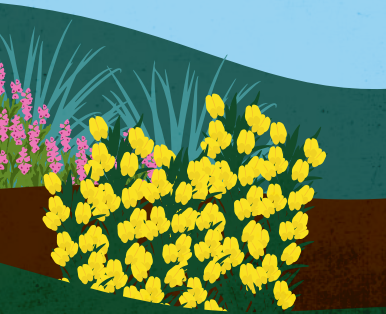


Age  
3-7

# Plant Adaptations





**Common gorse**  
(*Ulex europaeus*)



**With your child,  
explore some habitats  
at Kew Gardens.**



**Choose a habitat  
to explore more  
closely. Does it feel:**

- Damp
- Shaded
- Warm



**Explore the environment  
together. Is it:**

- Rocky
- Grassy
- Sandy



**Close your eyes.**

What can you hear?  
What can you smell?



How many different types  
of plant can you see growing  
in your chosen habitat?



**Now look at a different  
habitat together.**

Are the plants growing  
here different?



**Look closely. Can you  
find a plant with a special  
feature? Look for:**

- Prickly leaves
- A thorny stem
- An interesting scent



**With your child, discuss  
how the plant might have  
adapted to help it survive  
in this environment.**

### **Did you know?**

Common gorse is a shrub that thrives on heaths and coastal grasslands. Gorse has adapted to its environment: needle-like leaves protect the plant from hungry animals and dry conditions, while yellow, coconut-scented flowers attract pollinators.