

Age
7+

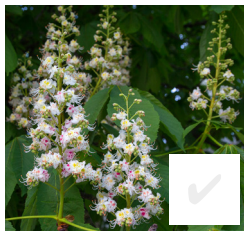
Spotter guide:

SUMMER

How many of these signs of summer can you spot? Explore Kew Gardens or visit your local park.

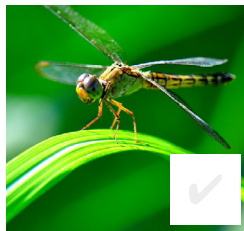


Royal Botanic Gardens
Kew



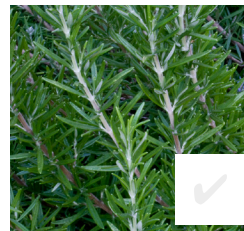
INDIAN HORSE CHESTNUT

When in flower, these trees are said to be 'in candle', due to their impressive pinkish-white flower spikes. Head to Kew's Nash Conservatory lawn to spot a heritage chestnut tree.



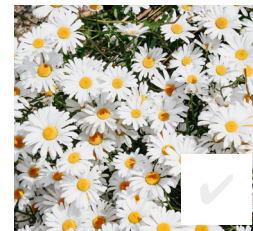
DRAGONFLY

Dragonflies can fly forwards, backwards and sideways, as well as hovering! Investigate where they lay their eggs.



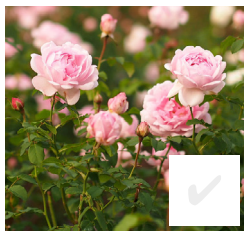
ROSEMARY

Smell the fragrant, evergreen leaves of this sun-loving herb. Studies have found that the chemical components of rosemary could help improve brain function.



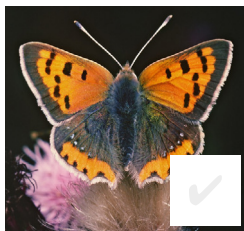
DAISY

A daisy is not just one flower, but a cluster of many flowers (florets) that mimic a single flower. Daisies are found everywhere on Earth except Antarctica.



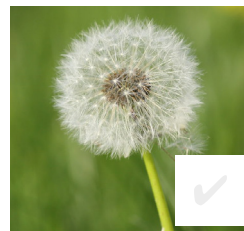
ROSE

Kew's Rose Garden is home to 170 different species and cultivars and most have thorny stems. Why do you think they have developed this feature?



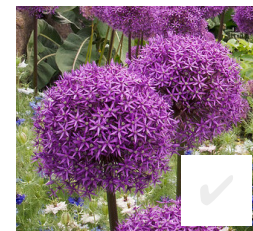
SMALL COPPER BUTTERFLY

This butterfly lives up to its name in colour and size. Can you find out which plants it pollinates?



DANDELION SEED HEAD

Look for their distinctive fluffy heads. How do you think the seeds are dispersed (spread)?



ALLIUMS

These plants are a common feature in gardens, including Kew's Great Broad Walk Borders. Which vegetables belong to the allium family?